

## Transforming Business Documents into Business Value Improve your process effectiveness with Content Intelligence.

Whether coming it is from an incoming image, email or document stream, capture content and gain insight faster and more confidently with intelligent processing and automation. Your document workflow processes will have better performance, transparency and workload predictability. Use the latest technologies to automate, scale, and manage capture processes, scale across the enterprise, whether they are on premise, in the cloud or both, manage centrally.

Today's business depends on making decisions faster with access to the best information. The ability to locate, transform and make actionable content in business documents – from multiple paper and electronic channels – has never been more critical to competitive advantage, operational efficiency and compliance.

ABBYY FlexiCapture is an intelligent platform for capturing meaningful data, relationships and insights from documents, forms and correspondence to improve business outcomes. FlexiCapture transforms documents into business value by capturing and validating information in any format at its point of need. Intelligently digitizing documents and automating document processes, FlexiCapture helps organizations remove risk and cost while accelerating revenue and drive competitive advantage every day.



### FASTER REVENUE, LOWER OPERATING COSTS

All data coming via multiple channels and in many formats are automatically processed, classified and delivered.



### PROMPT TRANSACTIONS, DECISIONS, AND ACTIONS

With data processing cycle two times shorter and high-level accuracy it is easy to meet deadlines, think and act accordingly.



### CONTROL, PREDICTABILITY, AND COMPLIANCE

The platform has built-in supervisory, reporting, and dashboard tools, and provides means for distributed processing.

# 01 Key New Features



## Scalability and enhanced performance

FlexiCapture can be scaled both vertically and horizontally to support high volume and fast document processing scenarios. Whether you need to process more than 3 million documents per day or 2,000 pages per minute, FlexiCapture platform can grow to meet your processing requirements. You can control multi-server installations, distributed infrastructure, and operators via centralized configuration and management.



## Connectors to leading RPA platforms

FlexiCapture Connectors for UiPath® and Blue Prism® Robotic Process Automation products enable a robot to call ABBYY FlexiCapture to intelligently classify documents, extract data, and deliver results back into the robotic process. Human operators can also participate in the validation and review of data that ABBYY FlexiCapture delivers to the robot.



## Multi-channel data entry

Multi-channel data entry enables you to process both paper and digital documents coming from multiple sources in a single flow, including MFPs, network scanners, e-mails, FTP, web post or hot folders and mobile devices.



## Multi-Level documents classification

Automate the task of understanding, separating, and routing documents through AI based classifiers that are trained automatically using the latest in machine learning methods. Whether processing and classifying structured forms, semi-structured documents like invoices, tax, claims or onboarding documents, or completely unstructured documents like correspondence and contracts, FlexiCapture can help you reduce your document handling costs while accelerating the process. No more manual sorting and labelling needed.



## Advanced Monitoring and Analytics tools

Monitoring and Analysis help you analyze document processing flow, ensure continuity of business process, optimize and prioritize resources or packages to tune performance and eliminate bottlenecks.



## Case management

Pre-define document sets for specific processes, transactions or use cases such as mortgage, insurance or finance applications with the new Case Management feature. Automatically check multiple insurance or mortgage case files for document completeness and compliance through pre-defined case rules.



## Multi-level data protection

Various confidential data fields within documents can be locked down and hidden using different methods during exchange and verification by operators with different access rights. HTTPs provides bidirectional encryption between a user and a server to protect against data interception and tampering attacks.



## Service Level Agreement support

Monitoring and meeting SLAs is the cornerstone of business operation. Perform monitoring and analytics with a new SLA monitoring feature to ensure your systems are delivering the optimum results in the given time-frame. Set priorities for document processing stages and change the order of documents in a queue to speed required timescales. Use standard reports and dashboards to meet your data processing and timing requirements with confidence.



## Auto-learning

New auto-learning capabilities help accelerate your time to production and reduce ongoing system maintenance costs. The technology allows the user to train the system to process flexible or irregular document layouts while the operator retains full control to edit, fine-tune or discard auto-learning results. Not only will the system learn and improve itself based on feedback from users leveraging ABBYY advanced machine learning and NLP (Natural Language Processing), but the cost of supporting and maintaining the system will be greatly reduced.



## Image enhancement

ABBYY Image Enhancement automatically improves images captured by mobile devices to optimize processing. It is also indispensable for processing documents with complex backgrounds like transcripts, identification documents and transportation forms, while automatically optimizing the image for processing or providing immediate feedback if image quality is poor. Features such as auto crop, background whitening, image quality assessment and capability to create custom enhancement profiles for different image sources, help process all documents regardless of their quality or source.



## Mobile Capture

Increase data availability and processing speed using mobile devices and other document sources for data entry. High quality mobile uploads are ensured by image enhancement tools. Confirmation reports notify you when images are uploaded and processed correctly.



## Multi-tenancy

Create a secured and isolated environment for tenants and apply common policies for different users with the multi-tenancy feature. Use secure, centralized administration tools to protect data across multiple workgroups with less time for set-up.



## Cross-browser support

FlexiCapture HTML5 Web stations support Chrome®, Firefox®, IE, and other browsers. Regardless of whether workstations are local, remote or web-based, global companies can distribute and manage relevant business processes across remote locations through a responsive Web interface.



## Self-service support

New Web Capture station allows one user to scan or upload images from the folder, enhance the image if needed, extract the data, verify the results and export extracted data to the SRM/ERP system for further processing. All stages can be completed at one station - ideal for when you don't have a huge document flow and don't split stages between different people.



## FlexiCapture Cloud

FlexiCapture Cloud adds the flexibility to decide which is the right deployment scenario for your requirements. Many customers have a cloud first mandate, while others prefer on premise solutions. FlexiCapture can run where it makes the most sense for you and configurations for FlexiCapture can be deployed to either option and is compatible with both. So start on premise and move to the cloud as needed. HTML5 clients enable you to easily distribute and control access and usability.

# 02 Key usage scenarios

## TAX/VAT, Blanks, Education forms processing

Transform streams of forms and documents of any structure and complexity into business-ready data.

## Proof of delivery

Increase the efficiency of document flows with capture and submission of Delivery Receipts and signed Bills of Lading.

## Unstructured documents/ Contract processing

Process unstructured documents, reduce administrative tasks, enhance transparency and remove from the employees' workload anything that can be automated.

## Invoice processing for Accounts Payable

Automated invoice processing and booking in an ERP system saves costs and has a quick ROI.

## Case management for Mortgage & Insurance

Automation of the customer onboarding process enables banks to increase the efficiency of applications management and facilitates improved customer service.

## Account Receivable & Order Processing

Improve every aspect of check capture, check scanning, and other key AR processes that minimizes manual input and keeps operational costs to a minimum.

# 03 Addressing industry-specific needs

## Banking and Finance

Improve customer service, liquidity and compete for new clients by automating manual paper work in bank account opening, credit card application processing, loan origination and other processes.

## Legal

Process and manage a wide variety of legal documents including: pleadings, application forms, contracts, benefit enrollment forms, correspondence and more.

## Insurance

Automate and accelerate the processing of high volumes of various document types— insurance claim and benefit forms, policy agreements.

## Transportation

Automatically process document such as Bills of Lading, Delivery Receipts, Commercial Invoices and Claims forms to convey business-critical information.

## Healthcare

Reduce the labor-intensive work and increase the efficiency of document processing, including patient records and medical prescription forms.

## BPO

Perfect for Document Processing Service Providers (DPSPs) who focus on a single business need or Business Process Outsourcing providers who support end-to-end business processes.

## Government

Achieve the highest levels of security, reliability, scalability and efficiency by automating procession of correspondence, contracts, surveys, census forms, voting ballots, pension cards, tax declarations, social applications etc.

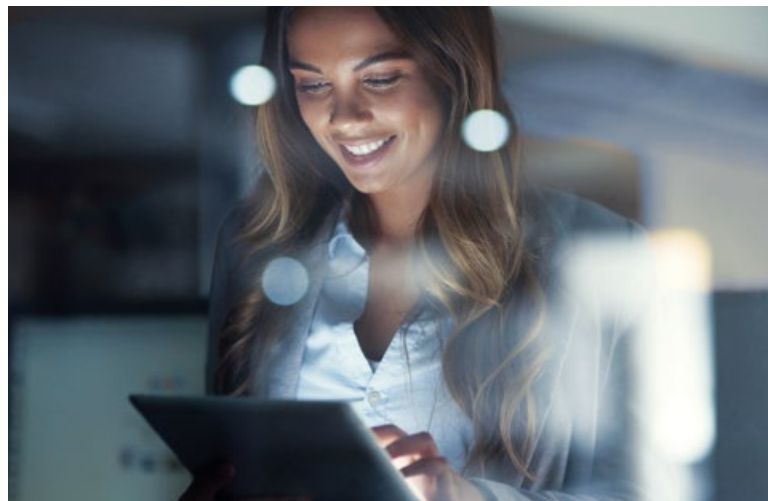
## Education

Efficiently manage documents including tests, examinations, reports, transcripts, letters of reference, etc.

# 04 Solutions that Add Value to Business Processes

ABBYY data capture and document processing solutions smoothly integrate into hundreds of ERP, ECM, CRM, BPM, RPA, LOB and BI systems. Robust and fully customizable, they will quickly become a highly functional and integral part of corporate business processes and IT environment.

FlexiCapture's robust APIs and progressive scripting enable tight integration with any systems of record and engagement. Default connectors for UiPath®, BluePrism®, Pega®, Appian®, M-Files® and Laserche® are also available.



# ABBYY®

If you have additional questions, contact your local ABBYY representative listed under [www.abbyy.com/contacts](http://www.abbyy.com/contacts)